

Ensuring that the AQUAvalve floods and drains correctly

Making sure your AQUAvalve floods and drains correctly is simply achieved and only takes a few seconds.

Hold the AQUAvalve at eye level so that you can see the yellow silicon fitted to the top float resting on the hole below it. The yellow silicon must create a tight seal when touching the hole.

If it looks like it is not sitting parallel on the hole below simply lift the top float and apply pressure to one side of the yellow silicon, drop the float and hold at eye level again. Repeat the procedure again if necessary.

Use the AQUAvalve image above as a guide.

Carrying out the simple procedure above will ensure that your AQUAvalve floods to approximately 20mm and drains completely before it re-fills the tray. Generally the above procedure is only necessary when you have taken your AQUAvalve apart for cleaning purposes & then re-assemble it. It is however prudent to check the position of the yellow silicon when the AQUAvalve is new.

1 At the end of your growing season clean the AQUAvalve using warm soapy water. Using an old tooth brush will help.

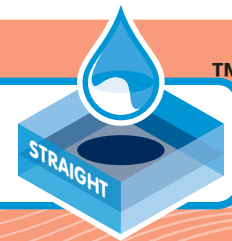
The AQUAvalve is easily disassembled. The top float will slide all the way across and the bottom float is unclipped from its pivoting position. The circular discs fitted to the top float can also be removed by using pliers to grip the raised point.

At this point it is advisable to remove the yellow silicones to avoid them being lost.

2 It is also handy to have a paper clip at hand so that you can push it through the AQUAvalve nozzle, this will remove any lime scale build up that may have occurred during the growing season.

Blowing through the AQUAvalve nozzle will also help to remove any build up. Do not under any circumstances use a drill & drill bit to clear the AQUAvalve nozzle.

This will potentially damage the AQUAvalve beyond repair.



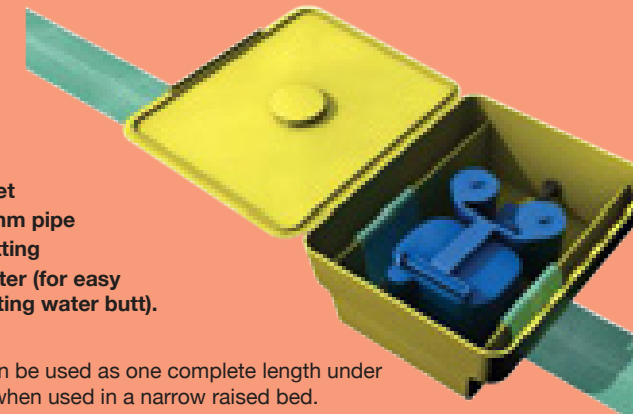
1

Remove all the contents and check all the parts are present. Check the contents list below.

AQUAbox Straight Kit contents list (Ref AQUAbox/1)

- 1x AQUAbox Straight
- 1x AQUAvalve
- 1x Circular Spirit Level
- 1x 6mm Top Hat Grommet
- 1x 1.5 metre length of 6mm pipe
- 1x Piece of Capillary Matting
- 1x 16mm – 6mm inline filter (for easy connection to an existing water butt).
- 1x Full Instructions

The capillary matting supplied can be used as one complete length under a grow bag or can be cut in half when used in a narrow raised bed.



2



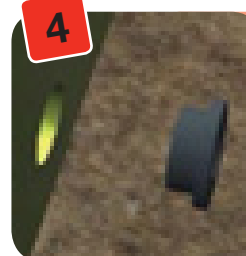
Half fill your raised bed with good quality compost, widely available from your local garden centre.

3



If the circular spirit level is not fitted into the lid of your AQUAbox Straight, simply insert the level into the small hole in the lid. Push firmly to ensure it is positioned correctly.

4



Advice

The circular spirit level is used to ensure that the AQUAbox Straight is level once positioned in your raised bed.

Next take your 6mm Top Hat Grommet and push it through the hole in the front of the AQUAbox Straight. Ensure you insert the 6mm grommet from the outside, as shown in the image.

Advice

If you find it difficult to insert the grommet a little smear of washing-up liquid around the hole will help the grommet slide in easily.



Take the 1.5 metre length of 6mm pipe and push it, (from the outside) through the 6mm Top Hat Grommet, as shown in the image. Pull the pipe through the grommet so that there is approximately 150mm inside the AQUAbox Straight.



The AQUAvalve can now be connected to the 6mm pipe. Unscrew the yellow collar and push the pipe through it. Push the 6mm pipe onto the nozzle of the AQUAvalve and then replace the yellow collar by screwing it onto the AQUAvalve.

Advice

Do **NOT** over tighten the yellow collar. When you feel the collar tightening **STOP**. Over tightening is not necessary and can cause damage to the nozzle of your AQUAvalve.



Once you have connected the AQUAvalve to the 6mm pipe, simply pull the pipe back through so that all the excess pipe inside the AQUAbox Straight is pulled out. As you pull the pipe out lower the AQUAvalve so that it locates onto the Tee section in the AQUAbox Straight.

Push the AQUAvalve onto the Tee ensuring that it is securely fitted.

Ask Josh...

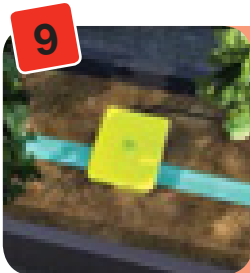
to find useful information and answers to common questions...
www.autopot.co.uk



Once you are happy that the AQUAvalve is connected to the AQUAbox Straight and all the excess pipe has been pulled out, next take your piece of capillary matting. If you are using the AQUAbox Straight in a raised or bean bed divide the matting into two pieces. However if you are using the AQUAbox Straight in a grow bag or grow bed keep the matting in one single strip. From the outside of the AQUAbox Straight thread either both pieces or the singular strip of matting through the slot/s either side of the AQUAvalve.

Advice

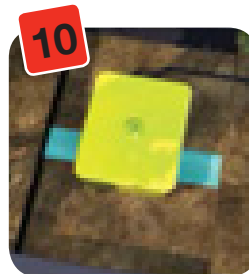
Make sure that the end of the capillary matting is touching the base of the AQUAbox Straight either side of the AQUAvalve, as shown in the image.



Now you have assembled the AQUAbox Straight place it in the centre of your raised bed on top of the compost in your half filled raised bed, as shown in image.

Advice

To provide efficient irrigation to the bed make sure the matting on both sides slopes slightly away from the AQUAbox Straight. By having the strips sloped on a slight downward gradient this will allow the water to travel along the matting more easily. **Ensure the strips are pushed into the soil on the downward slope to gain the most from your AQUAbox Straight all year round.**

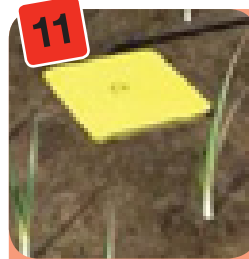


If you are happy with the position of your AQUAbox Straight, close & lock the lid, this will prevent any soil getting inside the AQUAbox Straight, then fill the rest of the raised bed with compost. A max soil level indicator is shown on the face of the AQUAbox Straight where the tube is connected.

Use the circular level in the AQUAbox Straight lid to ensure the AQUAbox Straight is level once in position. Applying pressure to any part of the lid will help you ensure the AQUAbox Straight is level.

Advice

Do **NOT** cover the AQUAbox Straight, it should sit slightly above the final level of the soil in your raised bed. As shown in image 11.



Now that the AQUAbox Straight is in position, with the lid still closed water the compost/soil with a watering can or hosepipe. This will prepare the compost for your seeds, small plants or bulbs. Allow the raised bed to drain, then plant up, following the guidelines on the seed packet or plant label. Water the seeds/plants through again to bed them in.

At this point there is no need to turn your AQUAbox Straight on as there is plenty of water already in the compost to supply the seeds/plants for up to 2-8 weeks.

After the seeds/plants have established themselves over a period of 2-8 weeks you can then turn on your AQUAbox Straight.

Please note the above is a guide line only and is dependant on plant size & weather conditions If it persistently rains you can turn off the AQUAbox Straight or if your plants are small/young and have not developed a large root system the water can be turned on for a day and then off for 3-4 days. Once the plants have established themselves the water supply can be left on all the time.

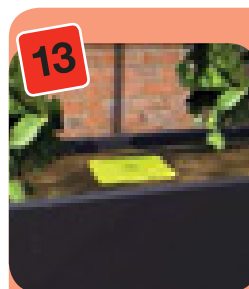
If growing in a raised bed pre-mixed feed in the compost will supply the small plants for up to 8 weeks so there is no need to add liquid feed to the water supply in your water butt/tank in the early stages. Start adding liquid feed to the water in your water butt/tank after the 6th-8th week, following the directions on the feed bottle or packet. For excellent results use easy2grow liquid feed, this feed is designed to be used with all the AutoPot products.



After the plants have established themselves over a period of 3-4 weeks you can then turn on your AQUAbox Straight. The image shows the AQUAbox Straight connected to a 350 litre water butt using a Click-fit connector with a 6mm option. The AQUAbox Straight can easily be fitted to any of the AutoPot tanks, inc the 30 litre & 47 litre tanks.

* The image shows the AQUAbox Straight connected to a 350 litre water butt using a 16-6mm Inline Filter.

Many AQUAbox Straights can be connected to a single tank using AutoPot fittings. When using large numbers of AQUAbox Straights over a large distance it is advisable to use 16mm pipe (hosepipe) as the main supply pipe, reducing the pipe size at each AQUAbox Straight point.



As the plants grow the roots in the raised bed will search for the water source, this being the AQUAbox Straight and the capillary matting attached to it. The roots will instinctively head towards the capillary matting and attach themselves to it. In turn drawing water from the AQUAbox Straight.

Keep the lid on the AQUAbox Straight closed at all times, this will prevent rain from washing soil inside the AQUAbox Straight. Only open the lid to inspect the inside and around the AQUAvalve. If you see any slugs remove them as they have a tendency to interfere with the moving parts.

Over time you will notice that the compost in the soil will seem dry. There is no need to be concerned as the water is being supplied by the capillary matting below the soil level. If you wish to use additional water in very hot periods this can be easily applied with a watering can or hosepipe.

Advice

Once the plants have established themselves the roots will search out for the water, occasionally they can be found following the capillary matting and into the AQUAbox Straight. If you find that roots have found their way into the AQUAbox Straight, simply lift the ends of the matting in the AQUAbox Straight, this in turn will lift the roots. Take a pair of scissors and cut the roots off, making sure that you don't leave any behind in the AQUAbox Straight. Replace the capillary matting making sure that the ends of the matting touch the bottom of the AQUAbox Straight either side of the AQUAvalve.